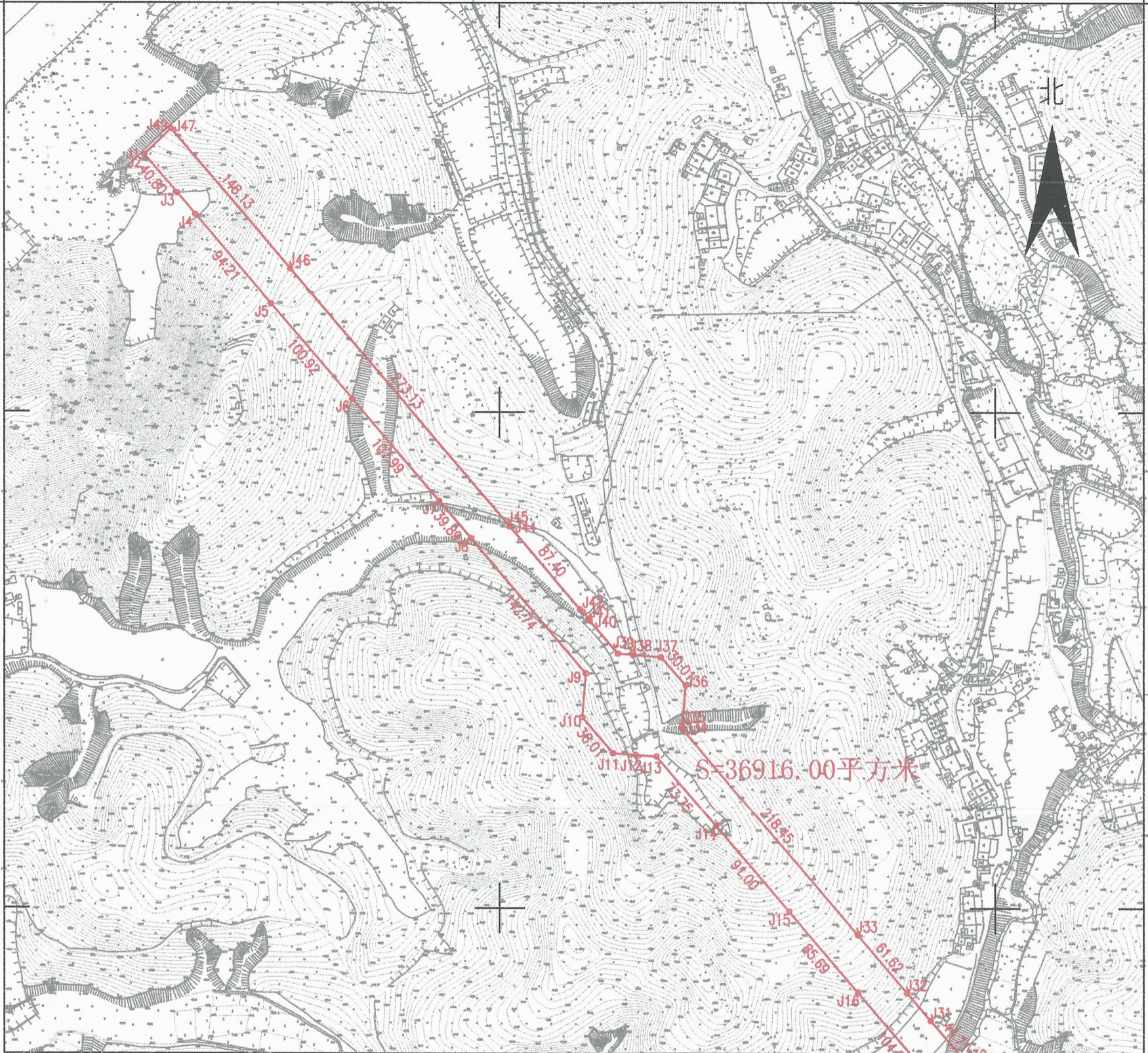


乡道竹禾线(Y086)(东坑)至鱼山村省道(S270)连接线工程(一期)用地勘测定界图(HC592)

鹤山市鹤城镇东坑村委会

单位: m.m²

38379.2 38380.12
2501.13 2501.13



界址点坐标表

点号	X	Y	边长	点号	X	Y	边长	点号	X	Y	边长
J1	2501007.751	38379312.999	0.07	J20	2500147.640	38380019.331	4.16	J39	2500605.952	38379695.158	34.76
J2	2501007.701	38379313.042	40.80	J21	2500144.406	38380016.718	6.69	J40	2500632.398	38379672.599	1.35
J3	2500976.663	38379339.523	22.71	J22	2500147.972	38380022.377	20.22	J41	2500633.595	38379671.974	7.64
J4	2500959.382	38379354.257	94.21	J23	2500163.819	38380034.928	20.21	J42	2500639.419	38379667.024	3.06
J5	2500887.700	38379415.397	100.92	J24	2500178.815	38380048.478	20.21	J43	2500641.533	38379664.808	87.40
J6	2500810.921	38379480.891	107.99	J25	2500194.106	38380061.687	14.81	J44	2500708.033	38379608.096	0.02
J7	2500728.764	38379550.973	39.89	J26	2500207.870	38380067.162	32.94	J45	2500708.045	38379608.076	273.13
J8	2500698.416	38379576.858	142.74	J27	2500208.404	38380034.231	11.59	J46	2500915.847	38379430.827	148.13
J9	2500589.812	38379669.486	35.45	J28	2500217.234	38380026.720	47.71	J47	2501028.552	38379334.695	0.07
J10	2500554.485	38379666.599	38.01	J29	2500253.528	38379995.760	28.93	J48	2501028.602	38379334.652	0.00
J11	2500525.721	38379691.445	18.23	J30	2500275.542	38379976.984	44.71	J49	2501028.599	38379334.649	30.06
J12	2500524.235	38379709.619	17.04	J31	2500309.562	38379947.967	29.48	J1	2501007.751	38379312.999	
J13	2500522.847	38379726.605	73.75	J32	2500331.994	38379928.833	61.62	S=36916.00平方米 合55.3740亩			
J14	2500466.733	38379774.467	91.00	J33	2500378.876	38379888.845	218.45				
J15	2500397.502	38379833.520	85.69	J34	2500545.075	38379747.084	2.32				
J16	2500332.305	38379889.129	104.51	J35	2500547.382	38379747.272	33.13				
J17	2500252.793	38379956.950	37.34	J36	2500580.402	38379749.971	30.01				
J18	2500224.384	38379981.182	58.50	J37	2500603.078	38379730.318	22.59				
J19	2500179.875	38380019.147	32.24	J38	2500604.918	38379707.801	12.69				
J20	2500147.640	38380019.331		J39	2500605.952	38379695.158					

鹤山市山水测绘有限公司

2499.85 2499.85

38379.2

38380.12

2020年6月数字化制图
鹤山市山水测绘有限公司
2000国家大地坐标系: 中央子午线114度
1985国家高程基准, 等高距为1米
2007年版式号: 丙测资字4424251

1:4000

鹤山市山水测绘有限公司
绘图员: 陈伟健
检查员: 周军
审核员: 周泳锋