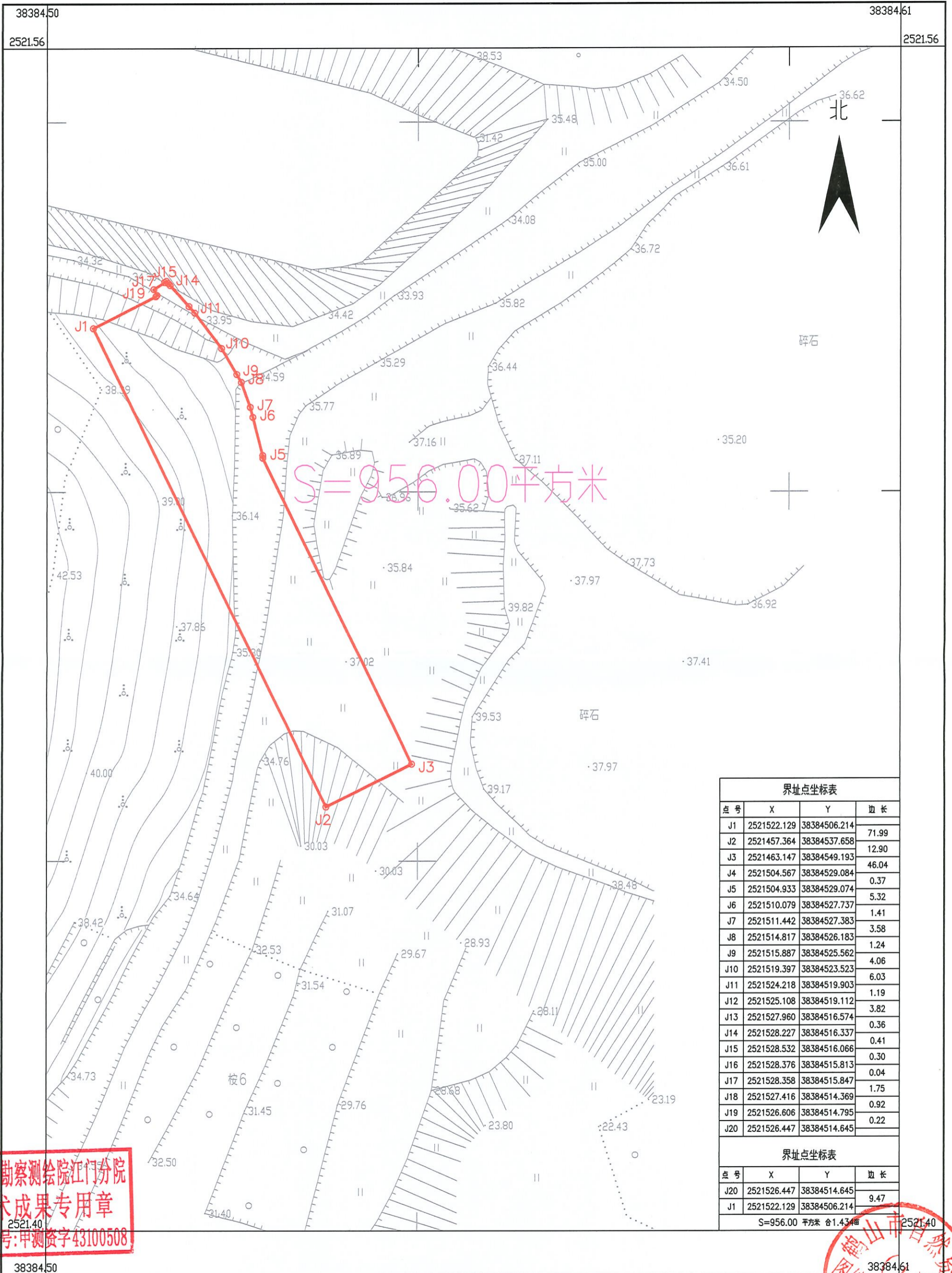


# 鹤山市2022年度第四十一批次城镇建设用地图(LK329)

鹤山市龙口镇三凤股份经济合作联社

单位: m.m<sup>2</sup>



| 界址点坐标表 |             |              |       |
|--------|-------------|--------------|-------|
| 点号     | X           | Y            | 边长    |
| J1     | 2521522.129 | 38384506.214 | 71.99 |
| J2     | 2521457.364 | 38384537.658 | 12.90 |
| J3     | 2521463.147 | 38384549.193 | 46.04 |
| J4     | 2521504.567 | 38384529.084 | 0.37  |
| J5     | 2521504.933 | 38384529.074 | 5.32  |
| J6     | 2521510.079 | 38384527.737 | 1.41  |
| J7     | 2521511.442 | 38384527.383 | 3.58  |
| J8     | 2521514.817 | 38384526.183 | 1.24  |
| J9     | 2521515.887 | 38384525.562 | 4.06  |
| J10    | 2521519.397 | 38384523.523 | 6.03  |
| J11    | 2521524.218 | 38384519.903 | 1.19  |
| J12    | 2521525.108 | 38384519.112 | 3.82  |
| J13    | 2521527.960 | 38384516.574 | 0.36  |
| J14    | 2521528.227 | 38384516.337 | 0.41  |
| J15    | 2521528.532 | 38384516.066 | 0.30  |
| J16    | 2521528.376 | 38384515.813 | 0.04  |
| J17    | 2521528.358 | 38384515.847 | 1.75  |
| J18    | 2521527.416 | 38384514.369 | 0.92  |
| J19    | 2521526.606 | 38384514.795 | 0.22  |
| J20    | 2521526.447 | 38384514.645 |       |

| 界址点坐标表 |             |              |      |
|--------|-------------|--------------|------|
| 点号     | X           | Y            | 边长   |
| J20    | 2521526.447 | 38384514.645 | 9.47 |
| J1     | 2521522.129 | 38384506.214 |      |

S=956.00 平方米 合1.434亩

湖南省勘察测绘院江

湖南省勘察测绘院江门分院  
技术成果专用章  
证书编号:甲测资字43100508



2022年11月数字化制图  
2000国家大地坐标系:中央子午线114度  
1985国家高程基准,等高距为1米  
2007年版式

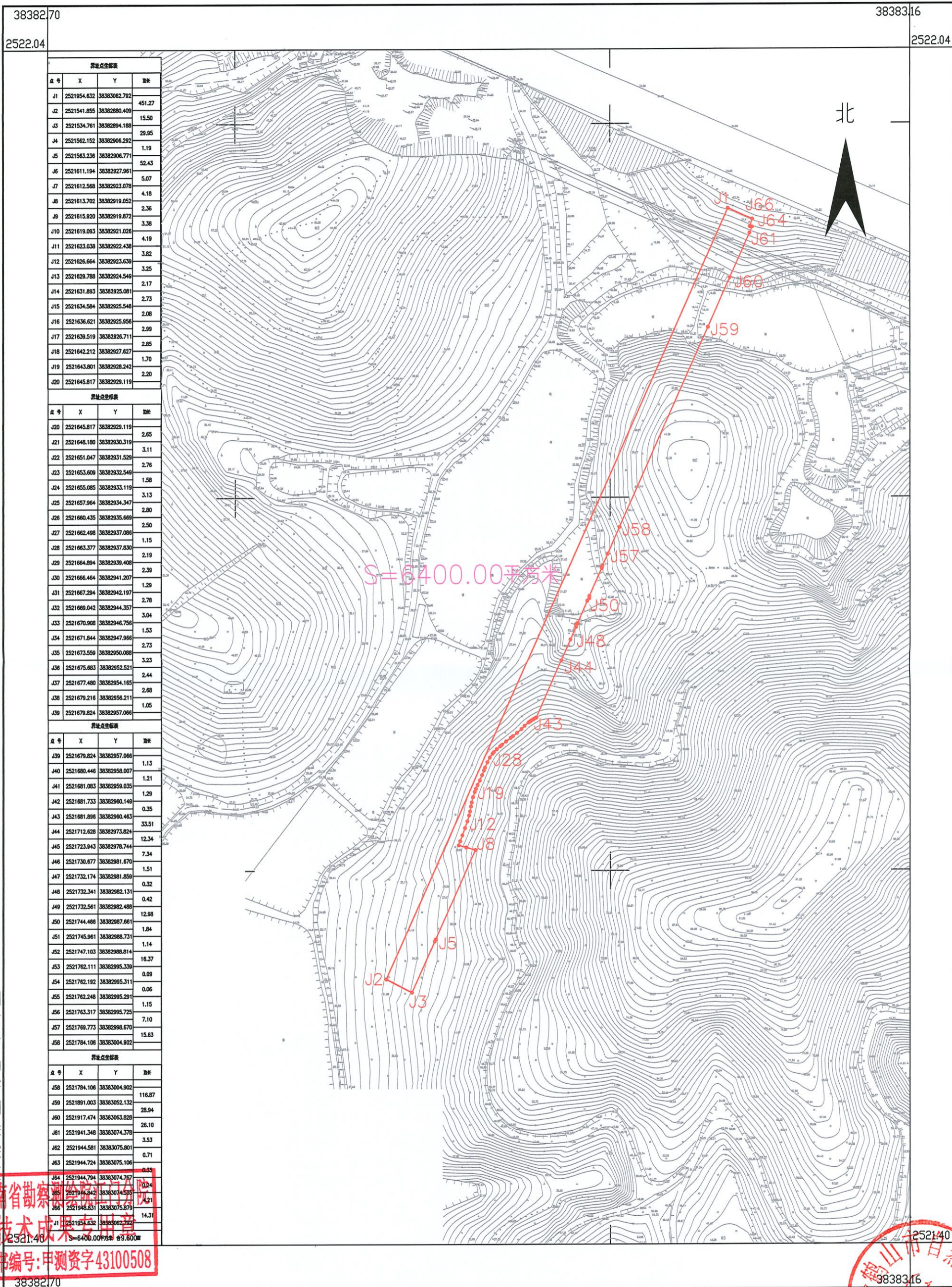
1:500

绘图员:李志昌  
检查员:廖军华  
审核员:周泳峰

# 鹤山市2022年度第四十一批次城镇建设用地图(LK330)

鹤山市龙口镇三凤股份经济合作联社、沙云村南塘股份经济合作社、沙云村沙洞第二股份经济合作社

单位: m.m<sup>2</sup>



| 点号  | X           | Y            | 距离     |
|-----|-------------|--------------|--------|
| J1  | 2521654.632 | 38383082.782 | 451.27 |
| J2  | 2521541.855 | 38382880.408 | 15.50  |
| J3  | 2521534.761 | 38382894.188 | 29.95  |
| J4  | 2521562.152 | 38382906.292 | 1.19   |
| J5  | 2521583.236 | 38382906.771 | 52.43  |
| J6  | 2521611.194 | 38382927.961 | 5.07   |
| J7  | 2521612.568 | 38382923.078 | 4.18   |
| J8  | 2521613.702 | 38382919.052 | 2.36   |
| J9  | 2521615.920 | 38382919.872 | 3.38   |
| J10 | 2521619.093 | 38382921.026 | 4.19   |
| J11 | 2521623.038 | 38382922.438 | 3.82   |
| J12 | 2521626.664 | 38382923.639 | 3.25   |
| J13 | 2521629.788 | 38382924.548 | 2.17   |
| J14 | 2521631.893 | 38382925.081 | 2.73   |
| J15 | 2521634.584 | 38382925.548 | 2.08   |
| J16 | 2521636.621 | 38382925.956 | 2.99   |
| J17 | 2521639.519 | 38382926.711 | 2.85   |
| J18 | 2521642.212 | 38382927.827 | 1.70   |
| J19 | 2521643.801 | 38382928.242 | 2.20   |
| J20 | 2521645.817 | 38382929.119 |        |

| 点号  | X           | Y            | 距离   |
|-----|-------------|--------------|------|
| J20 | 2521645.817 | 38382929.119 | 2.65 |
| J21 | 2521648.180 | 38382930.319 | 3.11 |
| J22 | 2521651.047 | 38382931.529 | 2.76 |
| J23 | 2521653.609 | 38382932.548 | 1.58 |
| J24 | 2521655.085 | 38382933.119 | 3.13 |
| J25 | 2521657.964 | 38382934.347 | 2.90 |
| J26 | 2521660.435 | 38382935.669 | 2.50 |
| J27 | 2521662.498 | 38382937.086 | 1.15 |
| J28 | 2521663.377 | 38382937.830 | 2.19 |
| J29 | 2521664.894 | 38382939.408 | 2.38 |
| J30 | 2521666.464 | 38382941.207 | 1.29 |
| J31 | 2521667.294 | 38382942.197 | 2.78 |
| J32 | 2521669.042 | 38382944.357 | 3.04 |
| J33 | 2521670.908 | 38382946.756 | 1.53 |
| J34 | 2521671.844 | 38382947.966 | 2.73 |
| J35 | 2521673.559 | 38382950.088 | 3.23 |
| J36 | 2521675.883 | 38382952.521 | 2.44 |
| J37 | 2521677.480 | 38382954.165 | 2.68 |
| J38 | 2521679.216 | 38382956.211 | 1.05 |
| J39 | 2521679.824 | 38382957.066 |      |

| 点号  | X           | Y            | 距离    |
|-----|-------------|--------------|-------|
| J39 | 2521679.824 | 38382957.066 | 1.13  |
| J40 | 2521680.446 | 38382958.007 | 1.21  |
| J41 | 2521681.083 | 38382959.035 | 1.29  |
| J42 | 2521681.733 | 38382960.146 | 0.35  |
| J43 | 2521681.896 | 38382960.463 | 33.51 |
| J44 | 2521712.628 | 38382973.824 | 12.34 |
| J45 | 2521723.943 | 38382978.744 | 7.34  |
| J46 | 2521730.677 | 38382981.670 | 1.51  |
| J47 | 2521732.174 | 38382981.856 | 0.32  |
| J48 | 2521732.341 | 38382982.131 | 0.42  |
| J49 | 2521732.561 | 38382982.488 | 12.98 |
| J50 | 2521744.468 | 38382987.661 | 1.84  |
| J51 | 2521745.961 | 38382988.731 | 1.14  |
| J52 | 2521747.103 | 38382988.814 | 16.37 |
| J53 | 2521782.111 | 38382995.339 | 0.09  |
| J54 | 2521782.192 | 38382995.311 | 0.06  |
| J55 | 2521782.248 | 38382995.291 | 1.15  |
| J56 | 2521783.317 | 38382995.725 | 7.10  |
| J57 | 2521789.773 | 38382998.670 | 15.63 |
| J58 | 2521784.106 | 38383004.902 |       |

| 点号  | X           | Y            | 距离     |
|-----|-------------|--------------|--------|
| J58 | 2521784.106 | 38383004.902 | 116.87 |
| J59 | 2521881.003 | 38383052.132 | 28.94  |
| J60 | 2521917.474 | 38383063.828 | 26.10  |
| J61 | 2521941.348 | 38383074.378 | 3.53   |
| J62 | 2521944.581 | 38383075.801 | 0.71   |
| J63 | 2521944.724 | 38383075.106 | 0.35   |
| J64 | 2521944.794 | 38383074.757 | 0.24   |
| J65 | 2521944.842 | 38383074.533 | 4.21   |
| J66 | 2521948.831 | 38383075.879 | 14.31  |
| J1  | 2521654.632 | 38383082.782 |        |

湖南省勘测测绘院江华分院  
 技术成果不出境  
 证书编号: 甲测资字43100508

鹤山市自然资源局  
 注册测绘师  
 李志明  
 廖宇华  
 周泳峰

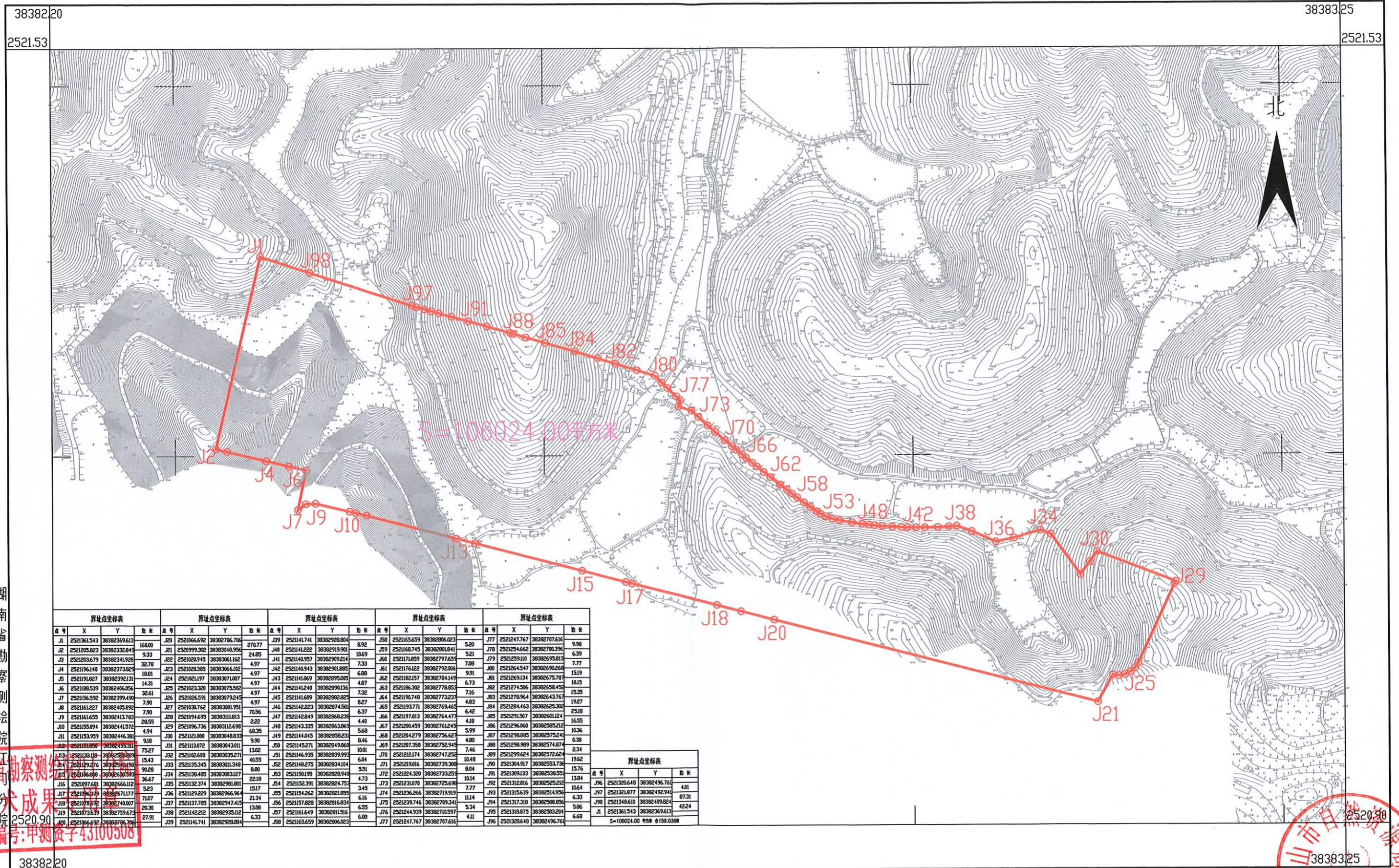
2019年1月数字化制图  
 2000国家大地坐标系: 中央子午线114度  
 1985国家高程基准, 等高距为1米  
 2007年版式

1:2000

# 鹤山市2022年度第四十一批次城镇建设用地图测界定界图 (LK331)

鹤山市龙口镇三凤村凤巢第三股份经济合作社、三凤村凤巢第五股份经济合作社、沙云村沙洞第二股份经济合作社、三凤村凤巢联队股份经济合作社、三凤村逢贵联队股份经济合作社、三凤股份经济合作联社

单位: m.m<sup>2</sup>



| 界址点坐标表 |             |              |       | 界址点坐标表 |             |              |        | 界址点坐标表 |             |              |       | 界址点坐标表 |             |              |       | 界址点坐标表 |             |              |       |
|--------|-------------|--------------|-------|--------|-------------|--------------|--------|--------|-------------|--------------|-------|--------|-------------|--------------|-------|--------|-------------|--------------|-------|
| 点号     | X           | Y            | 距离    | 点号     | X           | Y            | 距离     | 点号     | X           | Y            | 距离    | 点号     | X           | Y            | 距离    | 点号     | X           | Y            | 距离    |
| J1     | 2521061543  | 38382369.613 | 16.00 | J20    | 2521066.692 | 38382796.706 | 270.77 | J39    | 2521141.741 | 38382928.004 | 8.92  | J58    | 2521165.659 | 38382906.023 | 5.20  | J77    | 2521247.767 | 38382707.616 | 9.98  |
| J2     | 2521205.823 | 38382332.845 | 9.33  | J21    | 2521099.302 | 38383048.956 | 24.85  | J40    | 2521141.222 | 38382919.901 | 10.69 | J59    | 2521168.745 | 38382901.841 | 5.21  | J78    | 2521254.662 | 38382700.396 | 6.79  |
| J3     | 2521203.679 | 38382341.928 | 32.78 | J22    | 2521020.945 | 38383066.162 | 4.97   | J41    | 2521140.957 | 38382909.214 | 7.33  | J60    | 2521171.859 | 38382797.655 | 7.08  | J79    | 2521259.110 | 38382695.813 | 7.77  |
| J4     | 2521196.148 | 38382373.823 | 18.81 | J23    | 2521020.385 | 38383066.102 | 4.97   | J42    | 2521140.943 | 38382910.889 | 6.88  | J61    | 2521176.822 | 38382792.006 | 9.91  | J80    | 2521264.547 | 38382690.268 | 15.19 |
| J5     | 2521191.827 | 38382392.131 | 14.31 | J24    | 2521021.197 | 38383071.007 | 4.97   | J43    | 2521141.069 | 38382909.095 | 4.87  | J62    | 2521182.157 | 38382784.149 | 6.73  | J81    | 2521269.134 | 38382695.789 | 18.15 |
| J6     | 2521188.539 | 38382406.056 | 32.61 | J25    | 2521023.320 | 38383075.502 | 4.97   | J44    | 2521142.400 | 38382901.136 | 7.32  | J63    | 2521186.302 | 38382778.853 | 7.16  | J82    | 2521274.506 | 38382698.453 | 15.35 |
| J7     | 2521156.592 | 38382399.490 | 7.90  | J26    | 2521026.591 | 38383079.243 | 4.97   | J45    | 2521141.609 | 38382902.825 | 8.27  | J64    | 2521190.748 | 38382773.237 | 4.83  | J83    | 2521278.964 | 38382643.767 | 19.27 |
| J8     | 2521161.227 | 38382485.692 | 7.90  | J27    | 2521030.762 | 38383081.951 | 70.56  | J46    | 2521142.223 | 38382907.458 | 6.37  | J65    | 2521193.771 | 38382769.465 | 6.42  | J84    | 2521284.463 | 38382625.302 | 25.18 |
| J9     | 2521161.655 | 38382413.783 | 28.55 | J28    | 2521034.693 | 38383118.813 | 2.22   | J47    | 2521142.849 | 38382908.238 | 4.40  | J66    | 2521197.813 | 38382764.477 | 4.18  | J85    | 2521291.507 | 38382601.124 | 16.55 |
| J10    | 2521159.094 | 38382441.572 | 4.94  | J29    | 2521036.736 | 38383112.698 | 68.35  | J48    | 2521143.335 | 38382906.365 | 5.68  | J67    | 2521200.459 | 38382761.245 | 5.99  | J86    | 2521296.860 | 38382585.212 | 10.36 |
| J11    | 2521153.999 | 38382446.381 | 9.18  | J30    | 2521121.080 | 38383048.833 | 9.30   | J49    | 2521144.845 | 38382908.231 | 8.46  | J68    | 2521204.279 | 38382756.627 | 4.80  | J87    | 2521298.885 | 38382573.244 | 0.38  |
| J12    | 2521181.850 | 38382453.311 | 75.27 | J31    | 2521133.072 | 38383043.011 | 13.82  | J50    | 2521145.271 | 38382909.060 | 10.81 | J69    | 2521207.358 | 38382752.945 | 7.46  | J88    | 2521299.989 | 38382574.874 | 2.34  |
| J13    | 2521130.118 | 38382530.209 | 15.43 | J32    | 2521102.688 | 38383035.271 | 40.55  | J51    | 2521146.935 | 38382909.993 | 6.84  | J70    | 2521212.174 | 38382747.252 | 10.48 | J89    | 2521299.624 | 38382572.624 | 19.62 |
| J14    | 2521129.276 | 38382549.158 | 90.28 | J33    | 2521135.345 | 38383031.348 | 8.88   | J52    | 2521148.275 | 38382909.410 | 5.51  | J71    | 2521219.816 | 38382739.308 | 10.14 | J90    | 2521304.917 | 38382573.736 | 15.76 |
| J15    | 2521106.095 | 38382560.936 | 36.67 | J34    | 2521138.485 | 38383033.127 | 22.18  | J53    | 2521150.195 | 38382908.940 | 4.73  | J72    | 2521224.320 | 38382733.255 | 10.14 | J91    | 2521309.133 | 38382573.855 | 13.84 |
| J16    | 2521077.681 | 38382666.112 | 5.23  | J35    | 2521132.374 | 38383031.801 | 15.17  | J54    | 2521152.391 | 38382908.475 | 3.45  | J73    | 2521231.878 | 38382725.696 | 11.14 | J92    | 2521312.816 | 38382572.212 | 10.64 |
| J17    | 2521090.479 | 38382671.177 | 71.07 | J36    | 2521129.229 | 38382966.964 | 21.34  | J55    | 2521154.262 | 38382910.893 | 6.16  | J74    | 2521236.266 | 38382719.919 | 5.14  | J93    | 2521315.639 | 38382574.936 | 6.33  |
| J18    | 2521078.692 | 38382740.007 | 20.30 | J37    | 2521137.783 | 38382947.413 | 13.00  | J56    | 2521157.828 | 38382916.834 | 6.55  | J75    | 2521239.746 | 38382709.341 | 11.14 | J94    | 2521317.318 | 38382580.856 | 5.96  |
| J19    | 2521073.639 | 38382739.673 | 27.91 | J38    | 2521142.212 | 38382935.112 | 6.33   | J57    | 2521161.649 | 38382911.216 | 6.80  | J76    | 2521244.939 | 38382703.997 | 4.11  | J95    | 2521318.875 | 38382583.204 | 6.68  |
| J20    | 2521066.692 | 38382796.706 | 27.91 | J39    | 2521141.741 | 38382928.004 | 8.92   | J58    | 2521165.659 | 38382906.023 | 5.20  | J77    | 2521247.767 | 38382707.616 | 9.98  | J96    | 2521320.648 | 38382496.764 | 4.81  |

| 界址点坐标表         |             |              |       |
|----------------|-------------|--------------|-------|
| 点号             | X           | Y            | 距离    |
| J96            | 2521326.418 | 38382496.764 | 4.81  |
| J97            | 2521321.877 | 38382492.941 | 87.31 |
| J98            | 2521318.875 | 38382498.824 | 42.24 |
| J1             | 2521061.543 | 38382369.613 | 6.68  |
| S=106024.00平方米 |             |              |       |

湖南省勘察测绘院  
技术成果  
证书编号: 甲测资字43100508

鹤山市自然资源局  
3838325  
绘图员: 李志昌  
检查员: 廖军华  
审核员: 周泳峰

3838220

2520.90

2019年1月数字化制图  
2000国家大地坐标系: 中央子午线114度  
1985国家高程基准, 等高距为1米  
2007年版式

1:3000