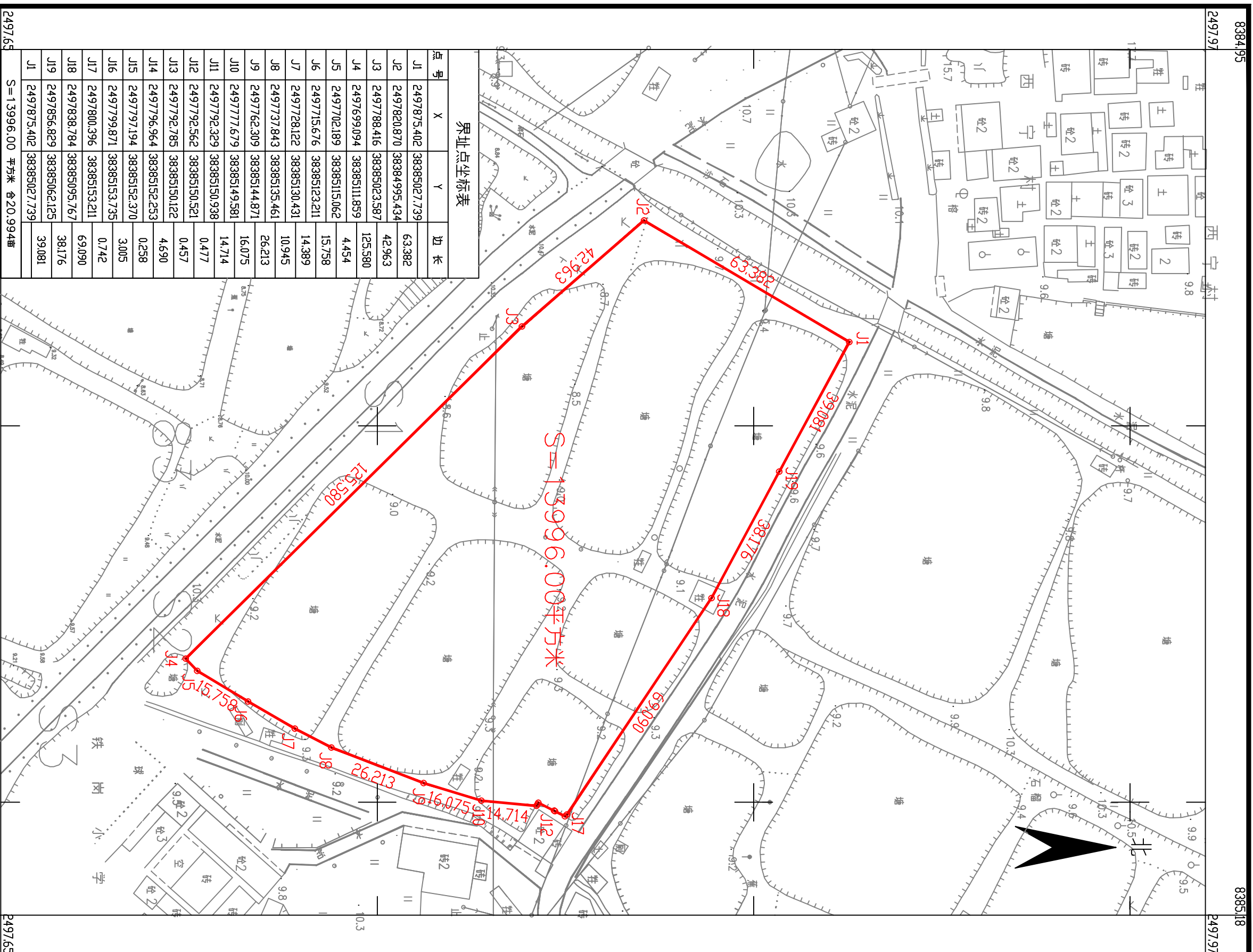


鹤山市2023年度第一批城镇建设用地勘测定界图 (GH20694)

鹤山市共和镇铁岗村委会

单位: m.m²



界址点坐标表

点号	X	Y	边长
J1	2497875.402	38385027.739	63.382
J2	2497820.870	38384995.434	42.963
J3	2497788.416	38385023.587	125.580
J4	2497699.094	3838511.859	4.454
J5	2497702.189	38385115.062	15.758
J6	2497715.676	38385123.211	14.389
J7	2497728.122	38385130.431	10.945
J8	2497737.843	38385135.461	26.213
J9	2497762.309	38385144.871	16.075
J10	2497777.679	38385149.581	14.714
J11	2497792.329	38385150.938	0.477
J12	2497792.562	38385150.521	42.963
J13	2497792.785	38385150.122	4.690
J14	2497796.964	38385152.253	0.258
J15	2497797.194	38385152.370	3.005
J16	2497799.871	38385153.735	0.742
J17	2497800.396	38385153.211	69.090
J18	2497838.784	38385095.767	38.176
J19	2497856.829	38385062.125	39.081
J20	2497875.402	38385027.739	39.081
J21	2497875.402	38385027.739	38.176
J22	2497875.402	38385027.739	69.090
J23	2497875.402	38385027.739	14.714
J24	2497875.402	38385027.739	16.075
J25	2497875.402	38385027.739	15.758
J26	2497875.402	38385027.739	4.454
J27	2497875.402	38385027.739	125.580
J28	2497875.402	38385027.739	42.963
J29	2497875.402	38385027.739	63.382
J30	2497875.402	38385027.739	63.382

S=13996.00 平方米 合20.994亩

2022年8月数字化制图
2000国家大地坐标系: 中央子午线114度
1985国家高程基准, 等高距为1米
2007年版式

1:1000

绘图员: 龚翔
检查员: 金祥
审核员: 周泳锋